

Technology Fee Presentation



Student Fee Management Committee – January 25, 2021 (FY22)

Overview

- Organizational Structure
- Review of FY21
- Strategic Planning
- Funding for IT @ WSU
- Technology Fee Recommendation
- FY22

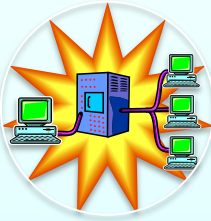


Information Services



Digital
Transformation
and User
Experience

Robin Honken,
Director



Infrastructure
and Data
Services

David Gresham,
Director



Teaching,
Learning, and
Technology
Services

Ken Graetz,
Director



Darrell W.
Krueger
Library

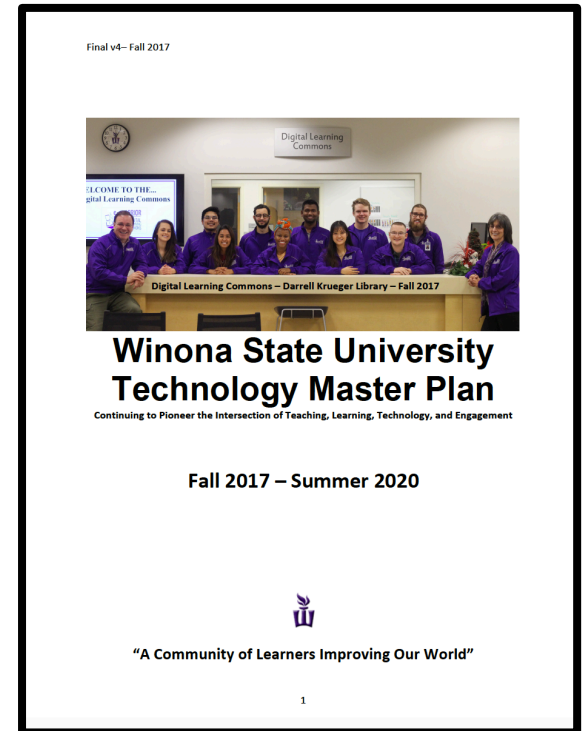
Ken Janz,
Dean

Technology Master Plan



- **Teaching and Learning** is one of the core pillars.
- New plan is under development for Fall 2021.

<https://www.winona.edu/strategic-planning/>



Updated Planning Pillars



- Digital Transformation
- User Experience
- Teaching and Learning
- IT Core

Planning Matters: Aligning Spending with Planning

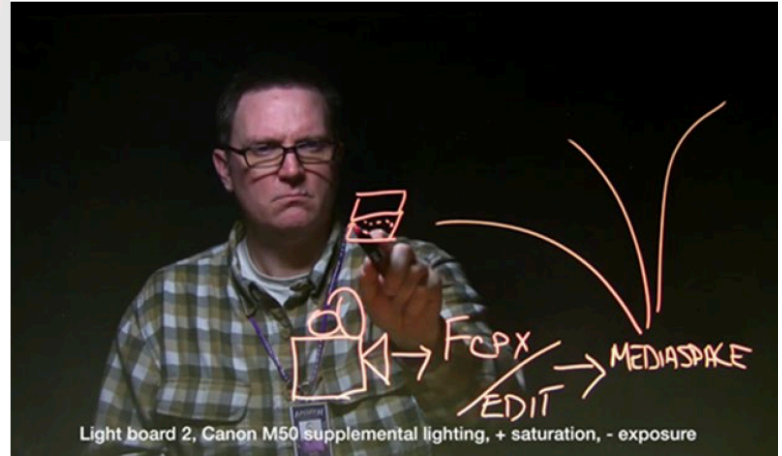


Projects Moving Forward and Funding Identified and Approved (Projects in Excess of \$50,000)

Project	Requestor	Who Benefits	Function	Consequences	Cost Center	FY18 Cost	FY19 Cost	FY20 Cost	Total
Classroom Upgrades (30 Regular Classrooms Per Year - 2 of which will be large presentation areas)	Student Technology Fee Committee, TLT	Students and faculty who use classrooms	Move classroom from analog to digital - New Teaching Stations	New laptops only come with HDMI. VGA is an outdated technology no longer supported. Resolution changes.	Student technology fee primarily.	\$150,000	\$150,000	\$150,000	\$450,000
Wireless Upgrades to Academic Network	Student Technology Fee Committee, TLT	WSU Community who use wireless	Increase density of wireless on campus as more and more data is pushed via wireless.	Users will become dissatisfied as video and other high bandwidth technologies take over the network.	Student technology fee primarily.	\$100,000	\$100,000	\$100,000	\$300,000

Learning Spaces

100% of all single-display, scheduled, general-purpose classrooms are now updated to our digital high-definition AV standards



Learning Environment

85% of students agreed or strongly agreed that “Campus learning spaces promote good teaching and learning.”

2020 WSU Assessment Day Survey

Cal Fremling – October Mini Legislative Session



Planning Matters - COVID



- 2017 – 2020 IT Strategic Plan – Pandemic Planning

3.3.3 Leveraging Azure - Implement Disaster Recovery Plan. <i>Assessment:</i> Creation of Disaster Recovery Plan.	INF	2
--	-----	---

Business Continuity Plan (Y2)

3.7.4 Expand services for VPN access: <ul style="list-style-type: none">• Align with HR requirements to work from home,• Split students from staff and faculty at network level,• Require 2 factor authentication for staff access, and• Setup emergency VPN to support Business Community and Emergency Issues / pandemic planning. <i>Assessment:</i> Improved security and user satisfaction	INF	3
--	-----	---

VPN Business Continuity (Y3)

Zoom – Implementation Fall 2019



WSU Active Zoom Meeting Hosts

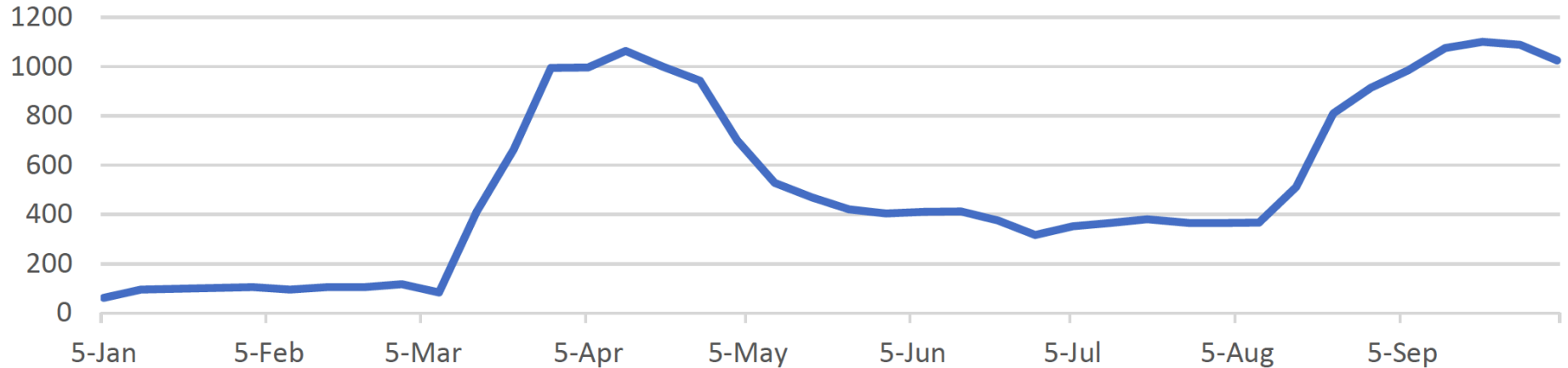


Figure 14 Active WSU Zoom Meeting Hosts Per Week

Data Services



Winona State University Cost Study Trends

Costs per Student FYE by course level and section C/P code, organized to match the system-wide Minnesota State Cost Study.

Financial CIP

- 05 - Area/Ethnic/Cultural/Gender Studies
- 09 - Communication, Journalism & Rela...
- 1107 - Computer Science
- 13 - Education
- 1418 - Materials Engineering
- 16 - Foreign Languages And Literatures
- 1907 - Human Develop/Family Studies, ...
- 2203 - Legal Support Services
- 23 - English
- 240102 - General Studies
- 26 - Biological And Biomedical Sciences
- 27 - Mathematics And Statistics
- 31 - Parks, Recreation, Leisure & Fitness
- 38 - Philosophy And Religious Studies
- 4005 - Chemistry
- 4006 - Geological & Earth Sciences/Ge...
- 4008 - Physics
- 42 - Psychology
- 4301 - Criminal Justice And Corrections
- 44 - Public Administration & Social Serv...
- 4506 - Economics
- 4507 - Geography And Cartography
- 4509 - International Relations And Affairs
- 4510 - Political Science And Government
- 4511 - Sociology
- 4901 - Air Transportation
- 5005 - Drama/Theatre Arts And Stagecr...
- 5007 - Fine and Studio Art
- 5009 - Music
- 5110 - Clinical/Medical Lab Science
- 5138 - Nursing
- 5202 - Business Admin, Mgmt & Oper

Cost/FYE

Net Expense

Student FYEs

Data Services Team
WSU Information Technology
ds@request@winona.edu

COVID-19 Self-Assessment - Winona State University

Private/Confidential Information Collection Notification

The following Tennessee Notice describes the purpose and intended use of the data that will be collected in the health screening process.

[View the entire Tennessee Notice](#)

Start the Self-Assessment

Please indicate which group(s) you are part of. Check all that apply.

- I am a student living **on** campus
- I am a student living **off** campus
- I am an employee
- I am a visitor, contractor, or vendor

[Next](#)

Course Delivery Methods, Fall 2020

Delivery Group	Course Count	Pct of Total
<input type="checkbox"/> Online	79	58%
Online Asynchronous	71	52%
Online Synchronous	8	6%
<input type="checkbox"/> Face-to-Face	32	24%
Face-to-Face	25	18%
Face-to-Face Alternate	7	5%
<input type="checkbox"/> Hybrid	18	13%
Hybrid Alternate	12	9%
Hybrid Face-to-Face	6	4%
<input type="checkbox"/> Field or Arranged Studies	3	2%
Field or Arranged Studies	3	2%
<input type="checkbox"/> Mostly Online	2	1%
Mostly Online	2	1%
<input type="checkbox"/> Awaiting Updates	2	1%
Awaiting Updates	2	1%
Total	136	100%

CourseCampus

- Select all
- Rochester
- Winona

CourseCollege

- Select all
- College of Business
- College of Education
- College of Liberal Arts
- College of Nursing & Health...
- College of Science & Engin...
- Other

CourseLevel

- Select all
- Lower
- Upper
- Graduate
- Masters

CourseHasEnrollment

- Select all
- Course has enrollment
- No enrollment yet

Delivery method definitions

Tools for COVID-19

Information Services – First Group to Welcome Students Back to Campus



Library



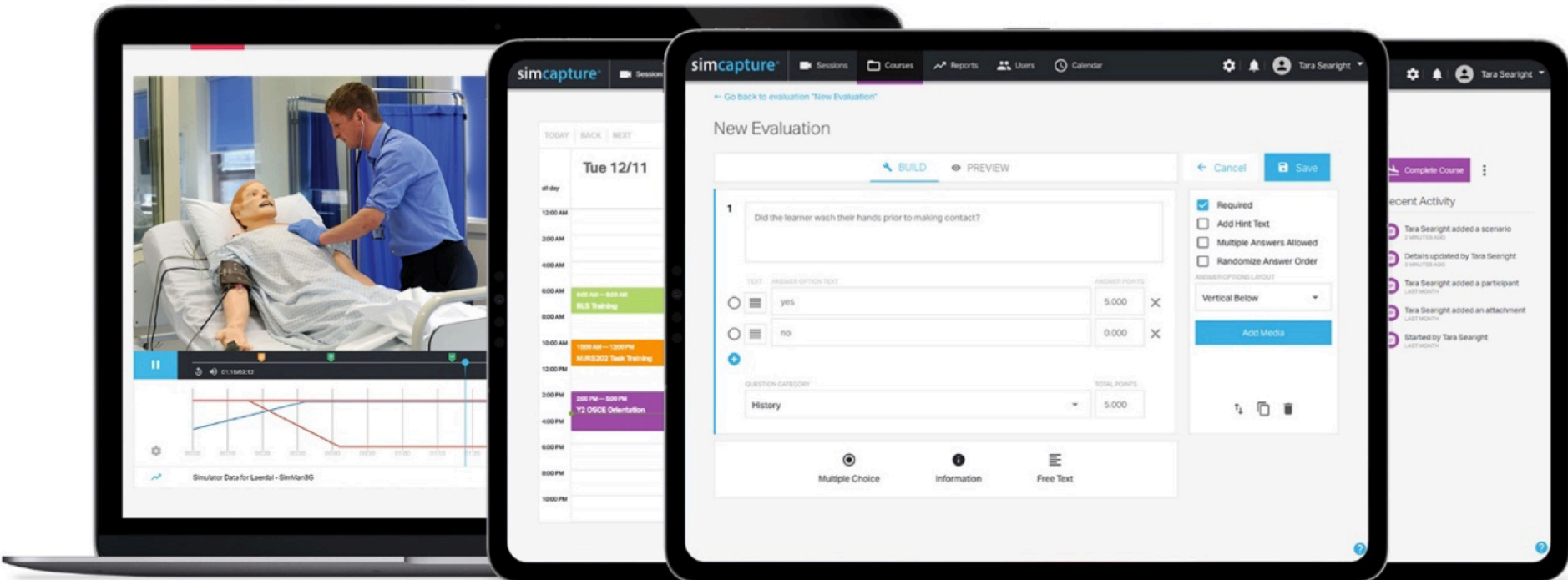
Library – May 11

Information Technology Help Desk – Walk In Reopened – May 11 Laptop Distributions – July 6

Laptop
Distributions



Rochester Graduate Nursing and Skills Lab



Virtual Reality



In September, TLT received four Oculus Quest virtual reality headsets and peripherals for distribution across the system to encourage professional development and training

Campus Nexus Engage – MyWarriorLife

A screenshot of the MyWarriorLife homepage dashboard. The page is divided into several sections: a left sidebar with user information and resources, a top navigation bar, a main content area with two featured articles, and a right sidebar with notifications. The user is identified as Becky Johnson. The main content area features an article titled 'So Many Reasons to Choose WSU' and another titled 'Connect with a Transfer Admissions Counselor'. The right sidebar contains three notification cards: 'Financial Hold is Preventing Registration', 'Field Trip Sign up before Sept 15', and 'Pick up Tickets on sale now'. The footer includes the text 'The oldest member of the colleges and universities of Minnesota State' and navigation links for 'About Winona State University', 'Support', and 'Contact Us'.

WINONA STATE UNIVERSITY

Dashboard To Do Calendar Academics Support Accounts Explore Hi, Becky

Name: Becky Johnson
WSU Email:
Personal Email: email@gmail.com
Anticipated Year/Term: Fall 2021
Academic Interest 1: Mathematics
Academic Interest 2:
Edit my info

RESOURCES
Ask WSU
WSU Technology Wiki
DARS Mapper 2
Bus Tracker
Campus Map
More

Attention You are on the UAT test site connected to the Sandbox.

So Many Reasons to Choose WSU

Winona State University has everything you need for a top-notch education, an amazing student experience and a foundation for a successful career.

A Message About Our Tours | Winona ...
Watch later Share

Connect with a Transfer Admissions Counselor

Wondering about transferring to WSU?
We are hosting an Ask-Me-Anything Admissions Zoom Room so you can talk live with a Transfer Admissions Counselor.

- Mondays at 11am-12pm
- Tuesdays at 1-2pm
- Wednesdays at 9-10am
- Thursdays at 12-1pm

You can also email Sarah Curtin at scurtin@winona.edu or wsutransfer@winona if you have any questions.

Financial Hold is Preventing Registration

You currently have an outstanding balance on your Student Account. Go to [Student eServices to pay your bill](#).

Field Trip Sign up before Sept 15

DISMISS

Pick up Tickets on sale now

Go to the PAC to pick up tickets or buy online at [somesite](#)

DISMISS

The oldest member of the colleges and universities of Minnesota State
About Winona State University Support Contact Us
Leave a message

Figure 34 MyWarriorLife Homepage

Building a Culture of Assessment – Data!



64% of alumni reported that their participation in the DLLP led to the development of computer skills that exceed their co-workers'.

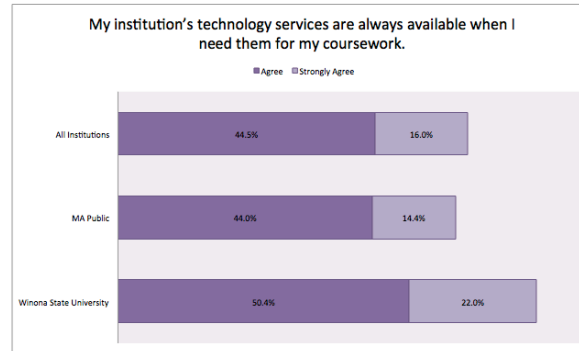
Alumni – 3 Years Out from Graduation

Data




89% agreed with the statement, *"The use of the laptop is important for my academic success."*

Data



Data




94% Agree - WSU is a leader in technology and technology infused learning (Second Highest of 10 accomplished strengths)

External Group (Top Employers)

Marketing Study by Vendi (Fall 2010)

Data



48% Program played a role in their decision to attend WSU

2012 - Survey of all entering students during June registration.

e-Warrior Program



“The use of a laptop is important to my academic success.” 94% of WSU students agreed or strongly agreed.

2020 Assessment Day Survey

“Overall, my instructors use technology effectively in their courses” 77% of WSU students agreed or strongly agreed.

2020 Assessment Day Survey

“How would you describe your overall technology experience at your institution?”
90% of WSU students selected either Good or Excellent, compared to 77% for all 4-year public institutions.

2020 ECAR Student Survey

\$ - Money

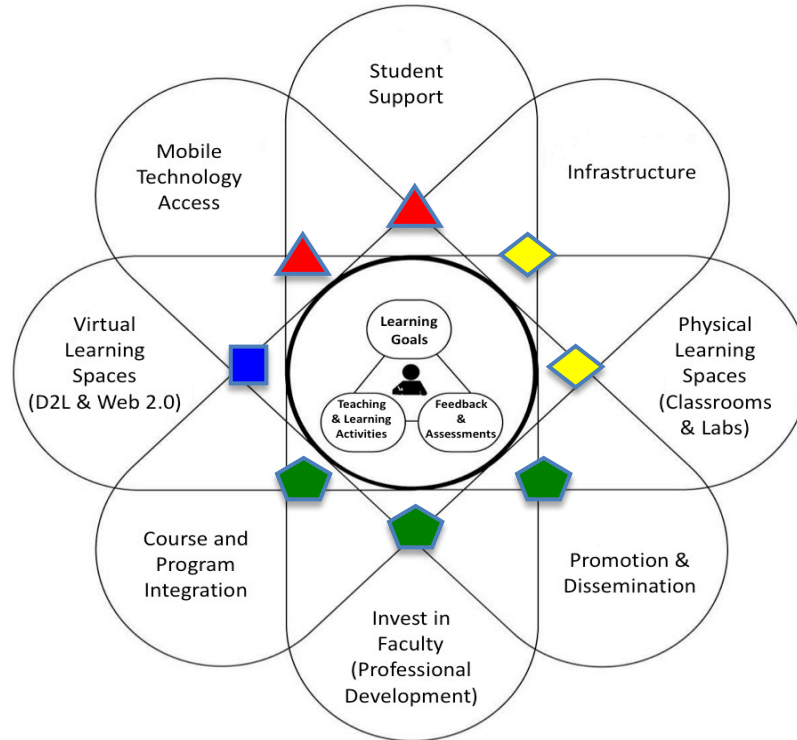
Funding Sources - IT





- e-Warrior: Digital Life and Learning Program Fee*
- Student Technology Fee*
- Res Hall Technology Fee*
- General Fund



* Represents a significant part of the IT budget

Student Fees



-  e-Warrior: Digital Life and Learning Program Fee
-  Student Technology Fee
-  General Operating Budget of the University
-  Office of the Chancellor Enterprise Fund

IT is asking for no increase



	FY22
Per Credit	\$7.62



WSU Student Technology Fee

**What is proposed
for FY22?**

Student Help

\$203,000

- Student staffing for walk-in support positions
- Student Technology Fee and e-Warrior Program supports over 100 student Positions



Salaries

\$363,441

- 8 Staff
 - Help desk phone support
 - Instructional design
 - classroom support
 - network support



Equipment

\$100,000

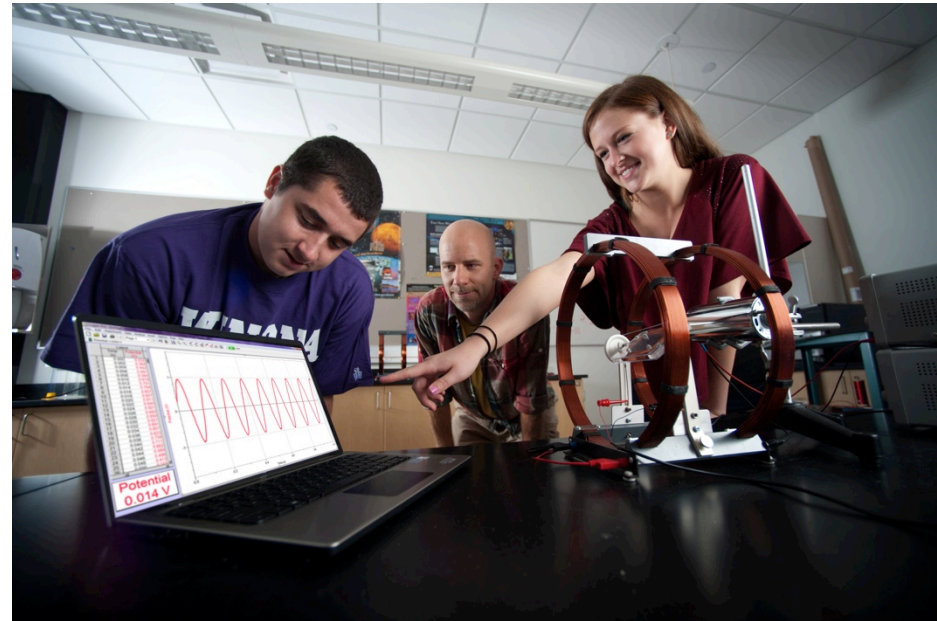
- **Classroom Upgrades**
 - Projectors
 - A/V Systems
 - Podiums
- **Network Switches (111 Comm. Closets)**
- **Wireless Access Points**
- **Servers**
 - Storage
 - Streaming Media



Software and Maintenance

\$365,000

- Server – OS & Database
- Utility – Antivirus, AntiSPAM, Backup, Network Monitoring Tools, & Remote Access (VPN)
- Applications – All the Microsoft, Adobe Products, SAS, SPSS, ArcGIS, EMS, etc



Supplies

\$28,319

- Student and Public Printers
 - Paper
 - Toner
 - Consumables
- Wiring Supplies



Campus Card

\$115,000

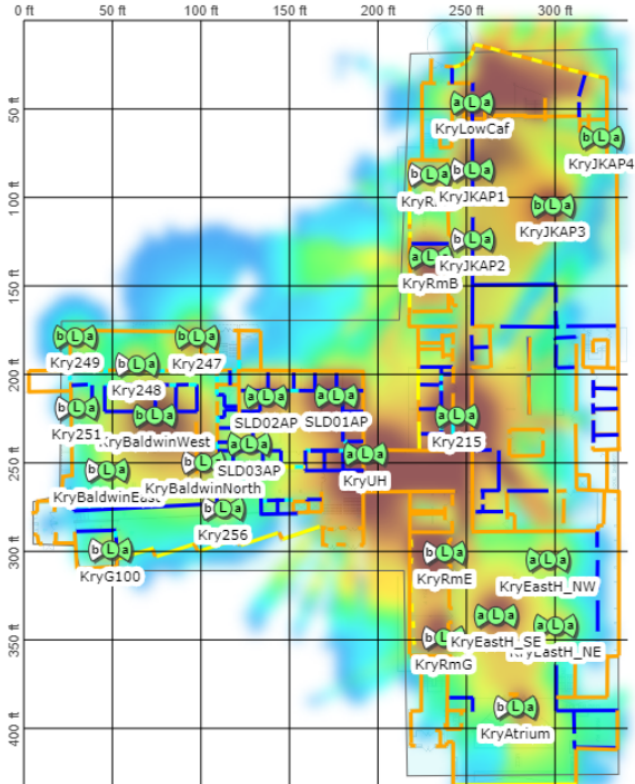
- Controlled by the Campus Card Office for maintaining and building the service.



NEW
INITIATIVES

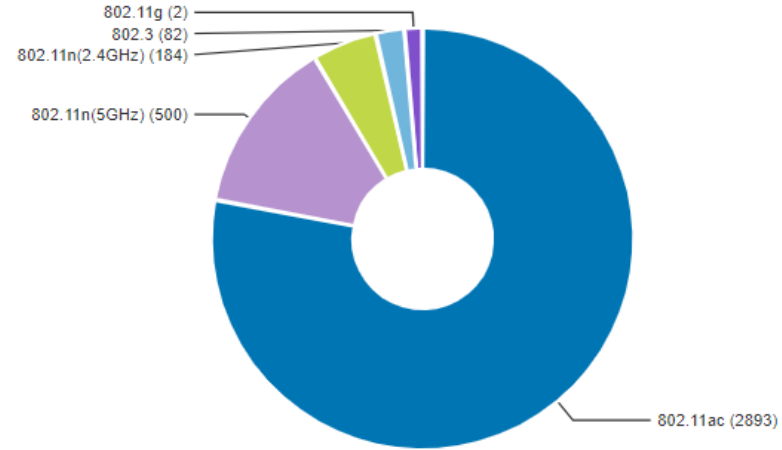


Wireless Upgrades



Client Distribution

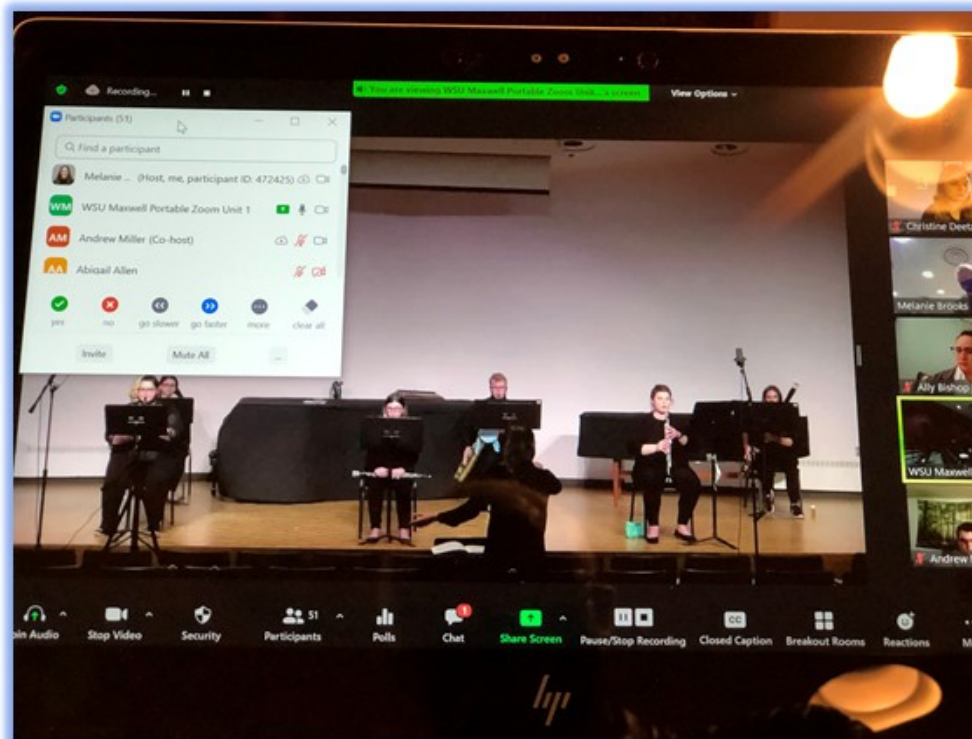
Protocol | EAP Type | Authentication Type

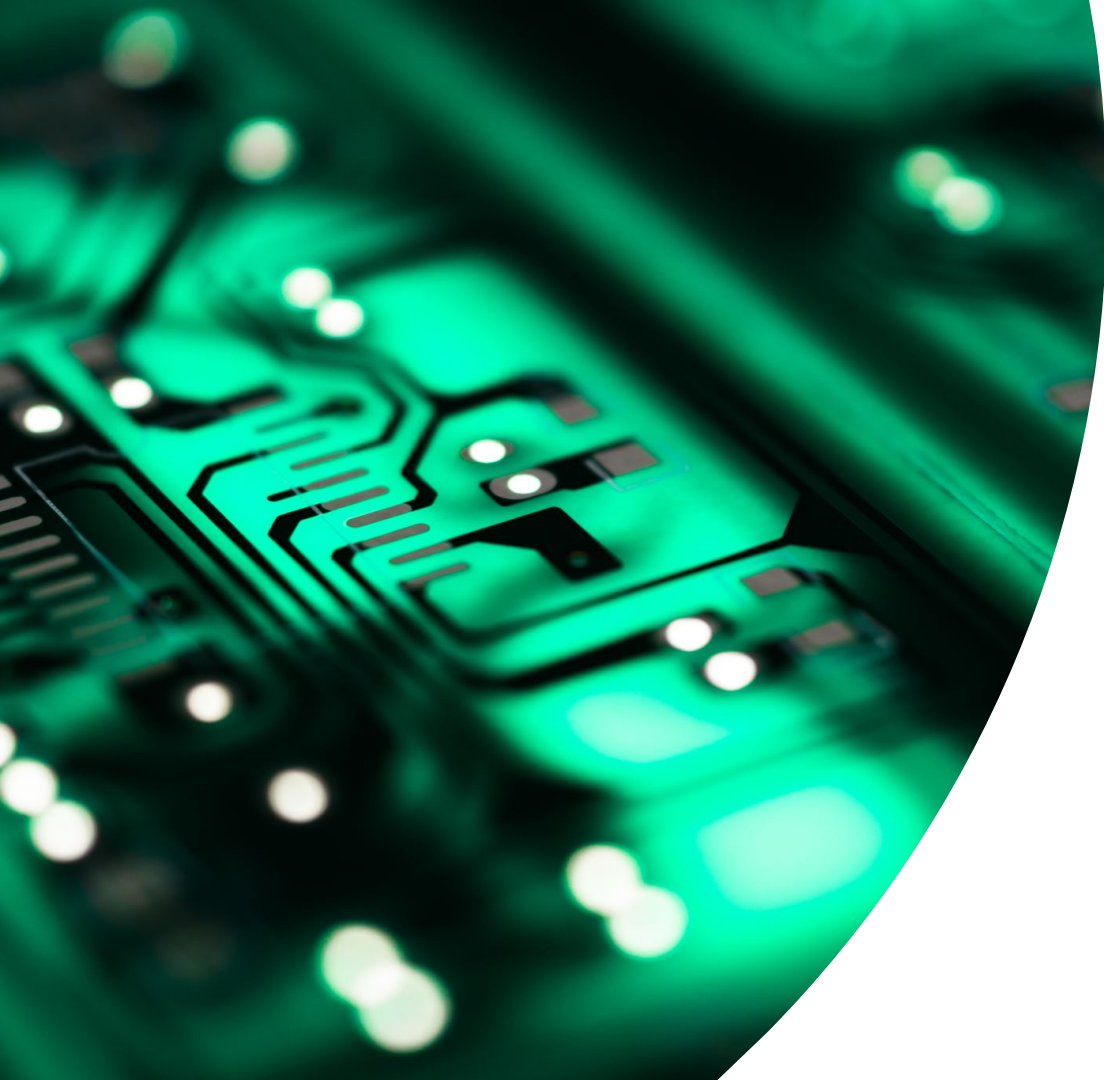


Support Heavier 2 Way Use

802.11ac 802.11n(5GHz) 802.11n(2.4GHz) 802.3 802.11g

Additional HyFlex Classrooms





Tomorrow's Technology

Tomorrow's Technology



- Open Educational Resources (OER)
- Extended Reality at Scale
- Personalized Learning Assistants
- Actionable Learning Analytics
- Online and Hybrid Course Quality Improvement
- Active Learning Classrooms

Questions



Robin Honken
Director for Digital Transformation and User Experience
Somsen 207
Winona State University
Winona, MN 55987

(507) 457-2215

RHonken@winona.edu

Ken Graetz
Director for Teaching, Learning, and Technology Services
Maxwell 160
Winona State University
Winona, MN 55987

(507) 457-2339

KGraetz@winona.edu